

ZWISS
TEX

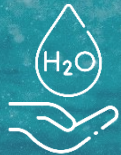
zwissPRINT

saving water by design

zwissPRINT

saving water by design

our
sustainable revolution
of textile
digital printing



Enormous water savings



Less energy used in the process



Less transport, short delivery times



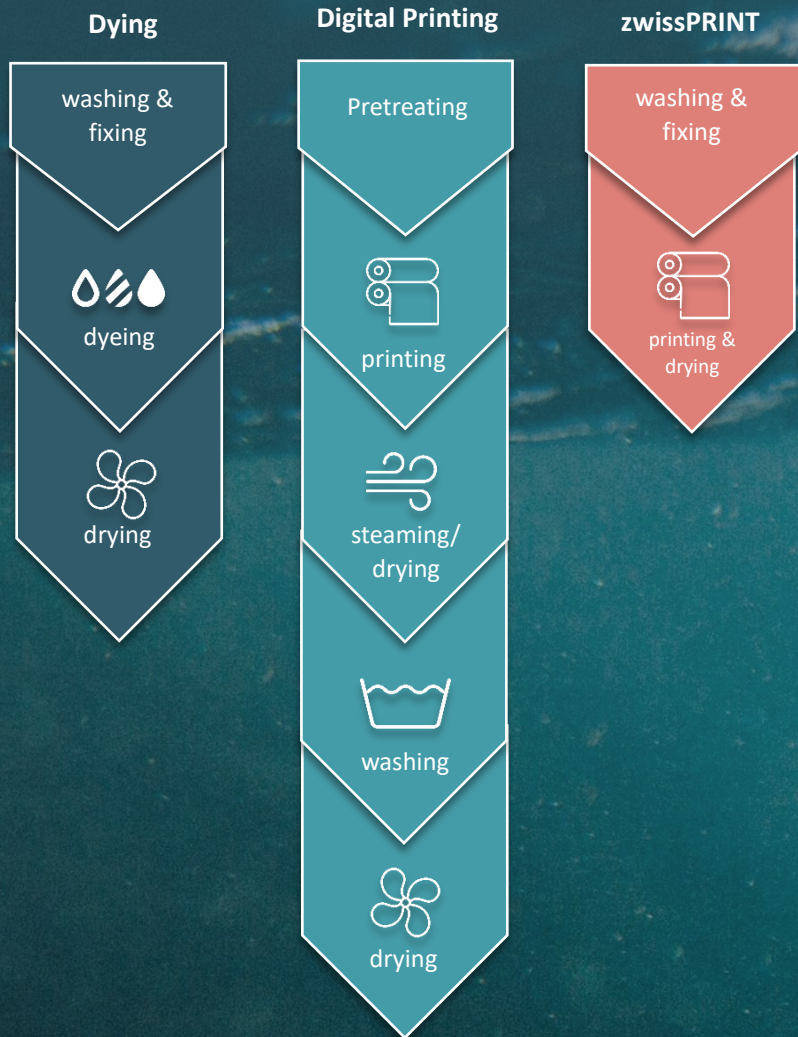
Extremely high design variability



Uniformly high quality



High process flexibility



SAVES 16 Mio. l/a
 about 10 l/m in the production process+
 annual drinking water savings for about
 350 people**



SAVES 400 t CO₂^e/a
 about 230g CO₂^e per meter
 in the production process ***



SAVES 2,5 t CO₂^e/a
 about 1,4g CO₂^e/m within logistics ****



ANY DESIGN
 any motives, patterns and colors
 natural & synthetic fibers
 woven, knitted and warp-knitted fabrics,
 fleece, faux leather



ANY FASTNESS
 customer-specific, product-related
 material fastnesses can be set



ANY TIME
 Development fast & on site
 no external dyeing processes
 printing & drying in one step



Alle im Druckprozess eingesetzten
 Chemikalien sind Bluesign®-approved

zwissPRINT

saving water by design

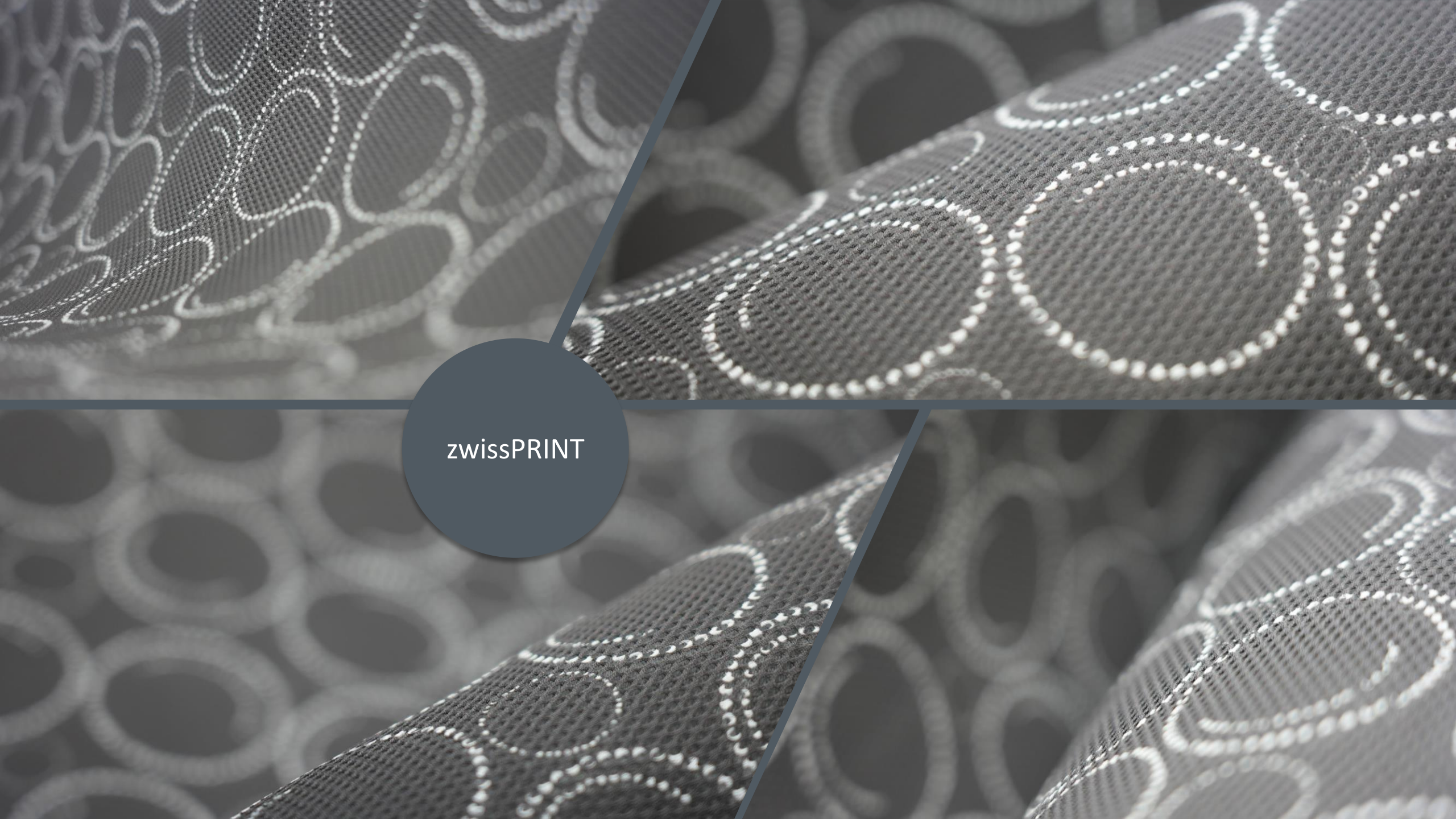
Comparing zwissPRINT with conventional dying - 1,75 Mio. m/a at full capacity are assumed.
 + 0,002 l/kg in print vs. 25-50 l/kg (mean = 37,5 l/kg) in the dyeing process
 ++ acc. to German Federal Environment Agency 2022: In 2019 a German citizen used a mean of 128 l/ drinking water per day.
 +++ Energybased calculation. Efficiency losses in the production process were factored in.
 Conversion factors according to BAFA. Savings of 98t CO₂^e through zwissTEX's use of green electricity included.
 ++++ Assumption based on current supplier landscape of zwissTEX Germany GmbH,
 47 delivery weeks with a saving of 655 km/week.

zwissPRINT

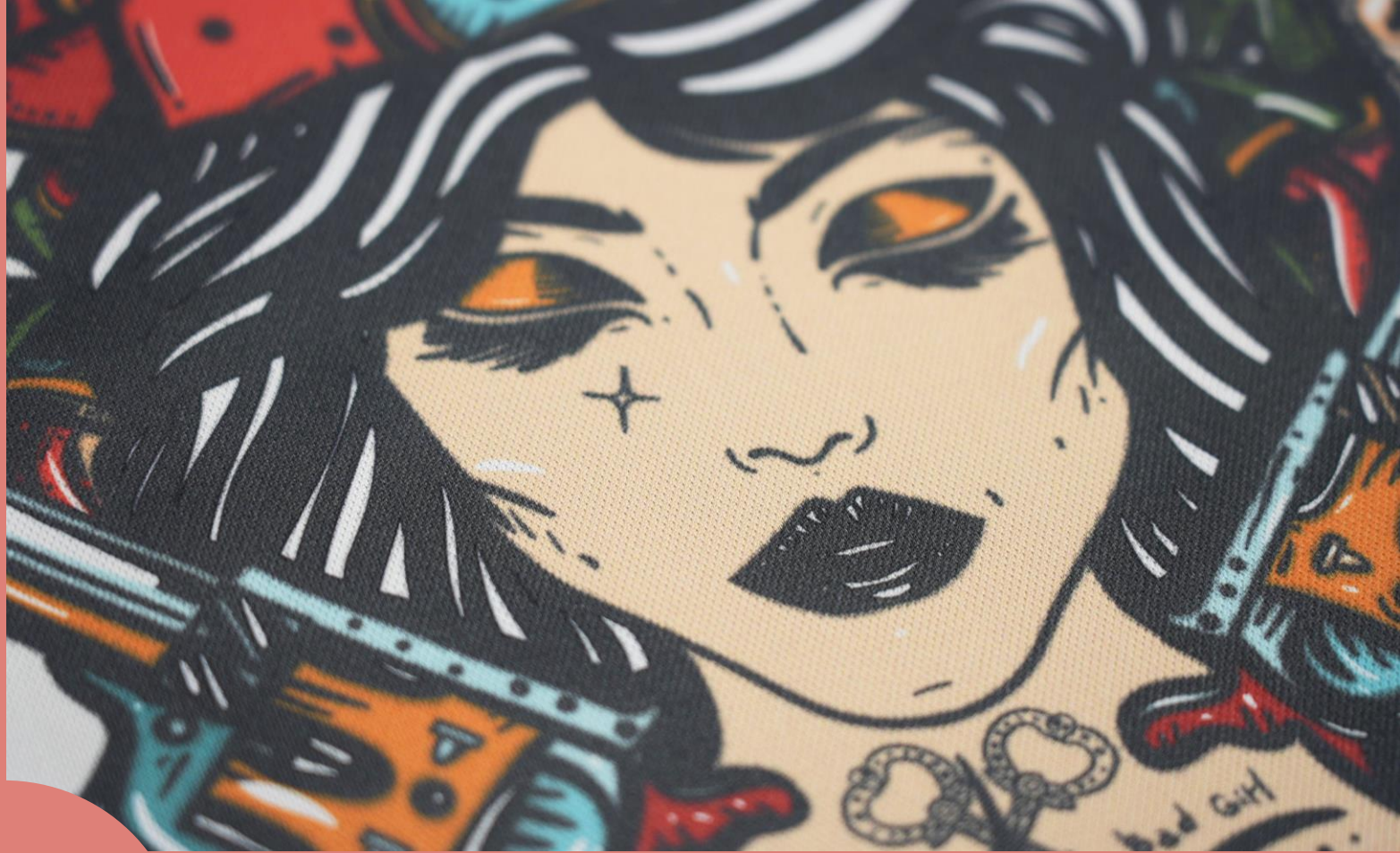
product samples



zwissPRINT



zwissPRINT

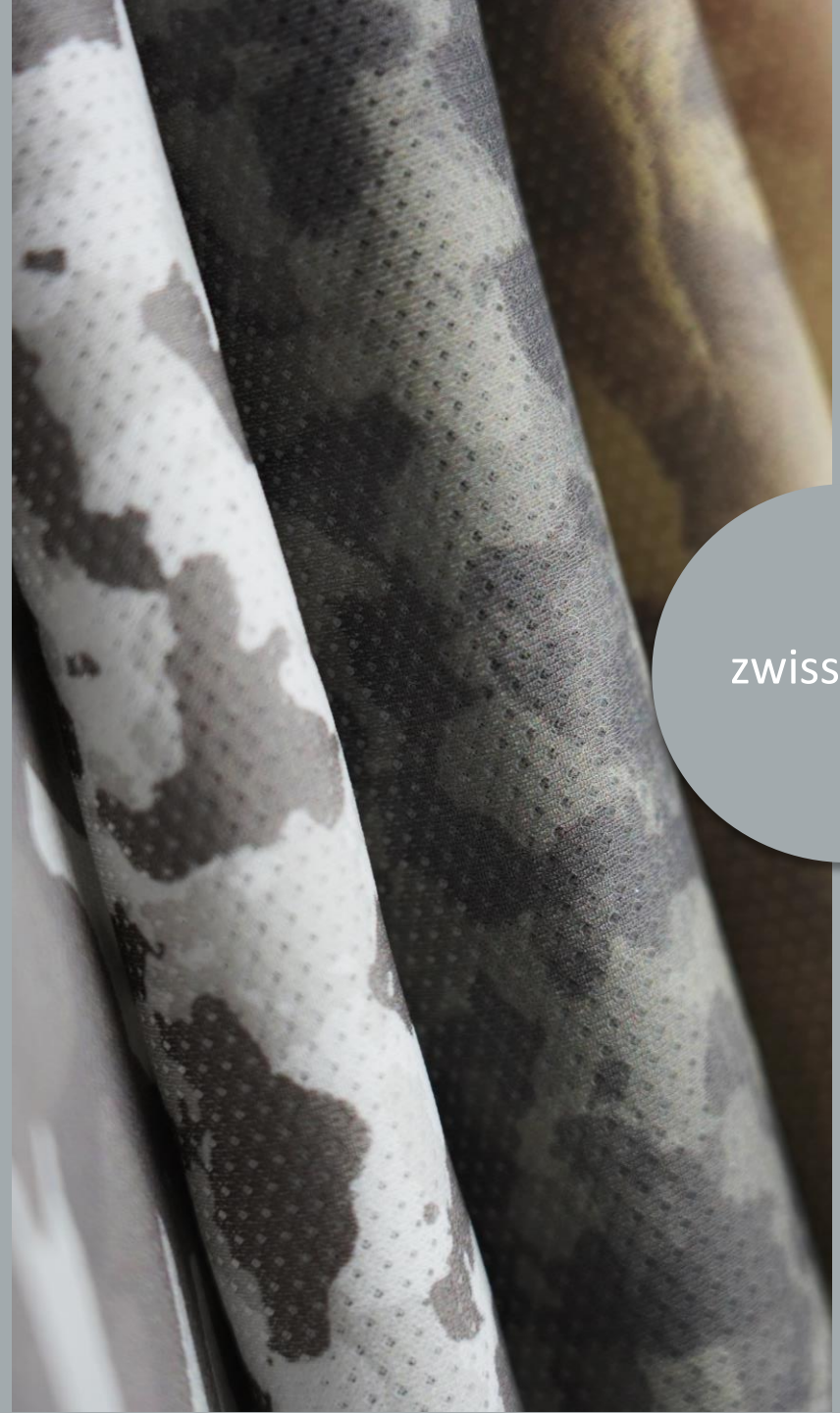


zwissPRINT

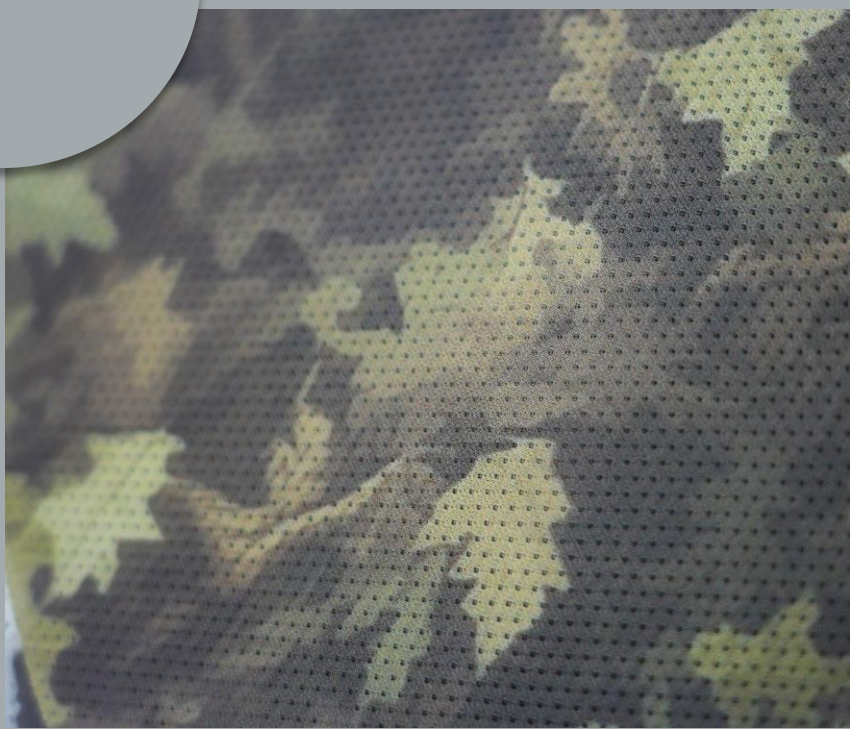


The image features a vibrant collage of various printed fabrics. The patterns include floral motifs in shades of pink, purple, and blue, as well as abstract designs with green, blue, and yellow. A central circular graphic, outlined in a light green color, contains the text 'zwissPRINT' in a white, sans-serif font. The overall composition is dynamic and colorful, showcasing the range of printing capabilities offered by zwissPRINT.

zwissPRINT

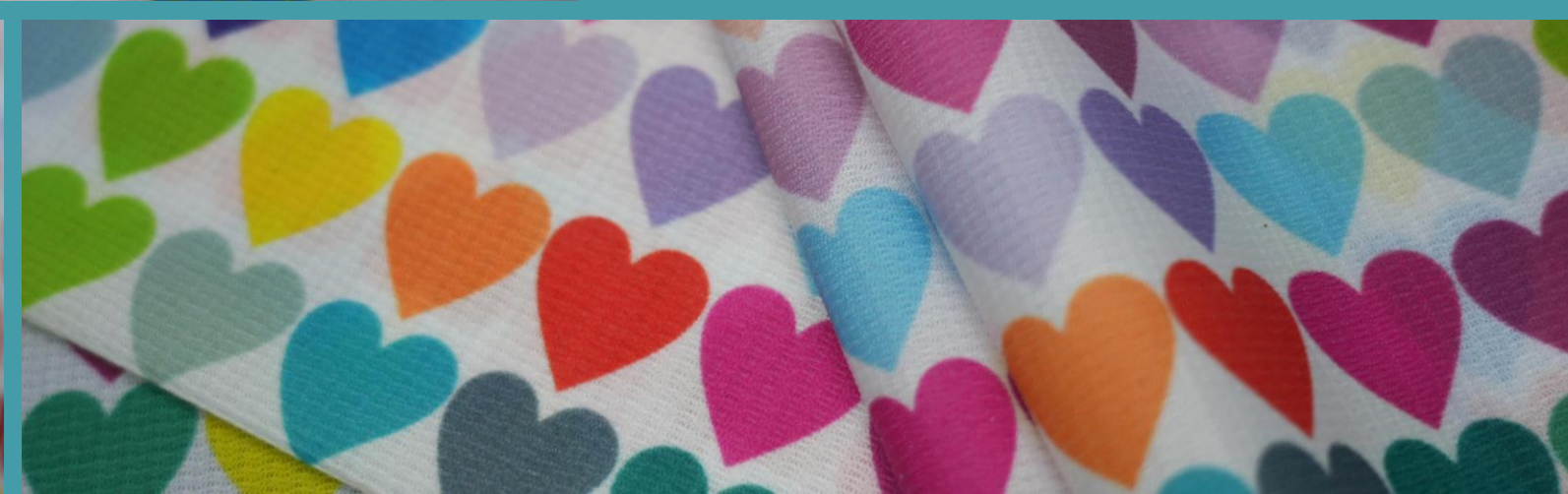
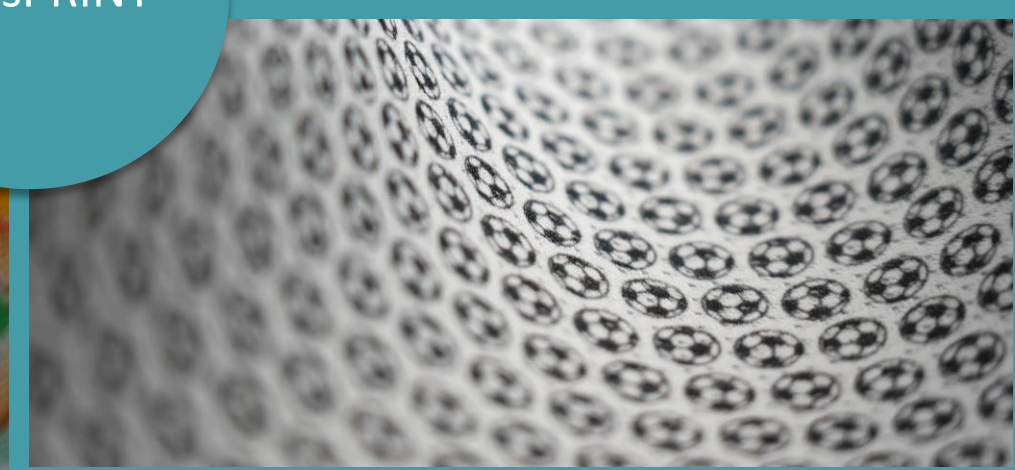


zwissPRINT





zwissPRINT



zwissPRINT

design variability and sustainability near maximum

