

ZWISS  
TEX

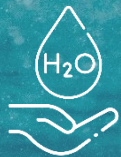
# zwissPRINT

saving water by design

# zwissPRINT

saving water by design

our  
sustainable revolution  
of textile  
digital printing



Enormous water savings



Less energy used in the process



Less transport, short delivery times



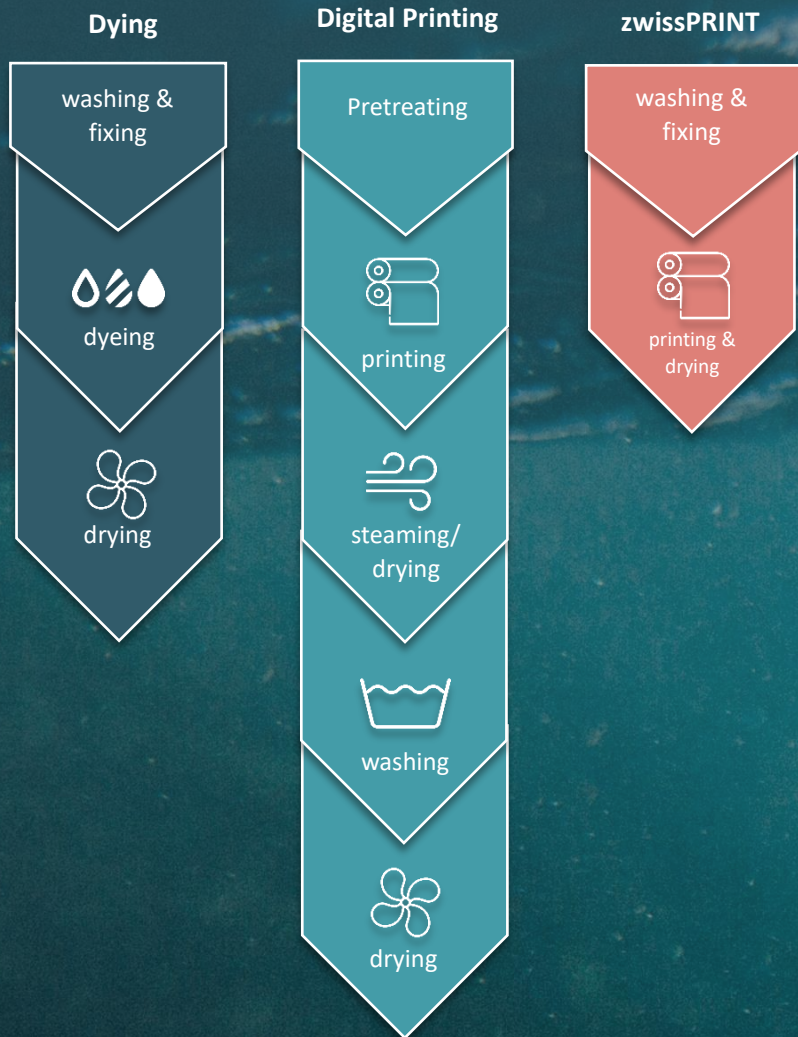
Extremely high design variability



Uniformly high quality



High process flexibility



**SAVES 16 Mio. l/a**

about 10 l/m in the production process+  
annual drinking water savings for about  
350 people\*\*



**SAVES > 13.500 t CO<sub>2</sub>/ a**

7,8 kg CO<sub>2</sub>/m in the production  
process +++, over 00.000 balloons  
CO<sub>2</sub> per year



**SAVES 2,5 t CO<sub>2</sub>/a**

about 1,4g CO<sub>2</sub>/m within logistics +\*\*\*\*  
less packaging



**ANY DESIGN**

any motives, patterns and colors  
natural & synthetic fibers  
woven, knitted and warp-knitted fabrics,  
fleece, faux leather



**ANY FASTNESS**

customer-specific, product-related  
material fastnesses can be set



**ANY TIME**

Development fast & on site  
no external dyeing processes  
printing & drying in one step



Alle im Druckprozess eingesetzten  
Chemikalien sind Bluesign®-approved

# zwissPRINT

saving water by design

Comparing zwissPRINT with conventional dyeing - 1,75 Mio. m/a at full capacity are assumed.

+ 0,002 l/kg in print vs. 25-50 l/kg (mean = 37,5 l/kg) in the dyeing process

\*\* acc. to German Federal Environment Agency 2022: In 2019 a German citizen used a mean of 128 l/ drinking water per day.

+++ Energybased calculation. Efficiency losses in the production process were factored in.

Conversion factors according to BAFA. Savings of 98t CO<sub>2</sub> through zwissTEX's use of green electricity included.

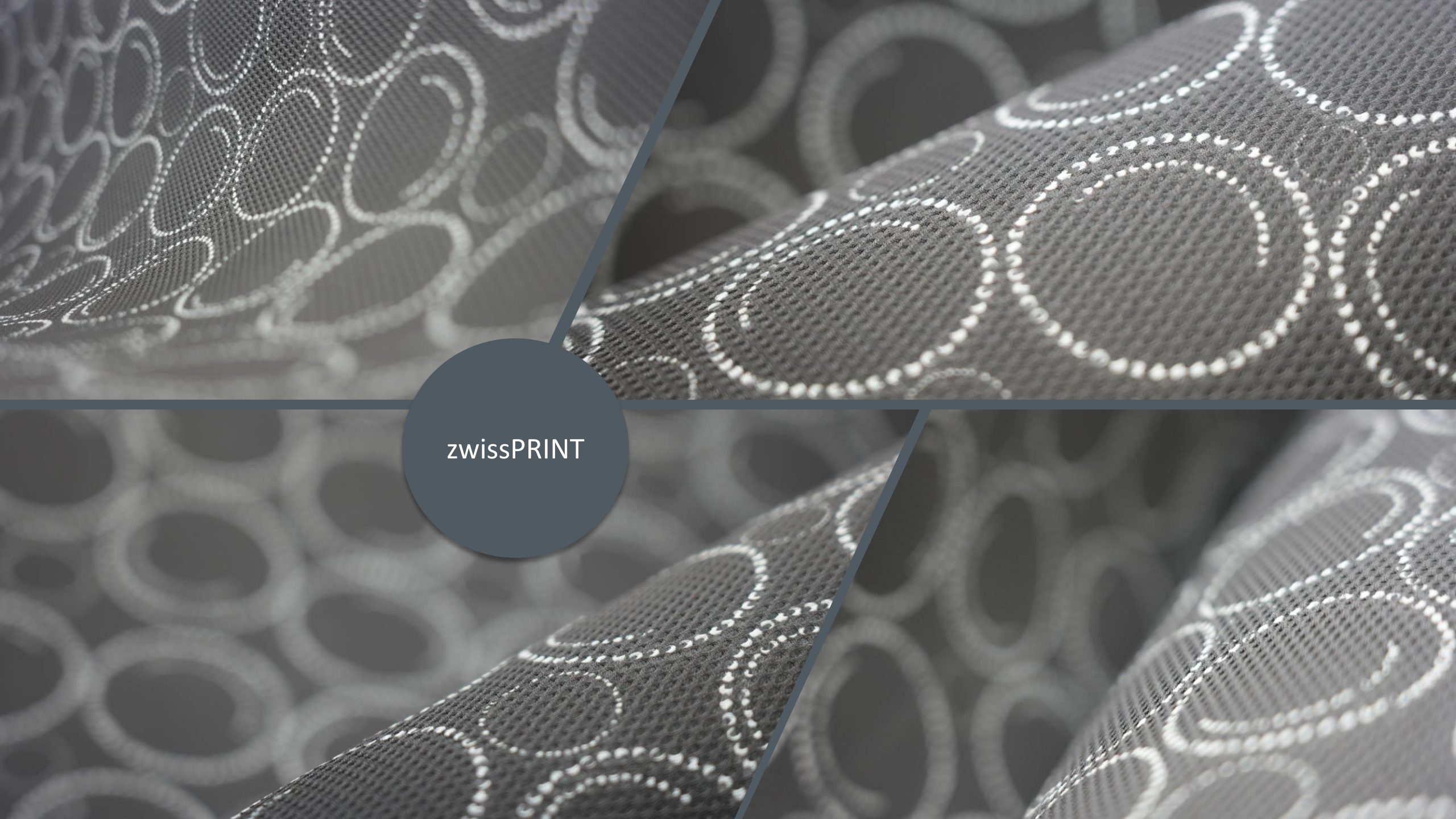
\*\*\*\* Assumption based on current supplier landscape of zwissTEX Germany GmbH,  
47 delivery weeks with a saving of 655 km/week.

# zwissPRINT

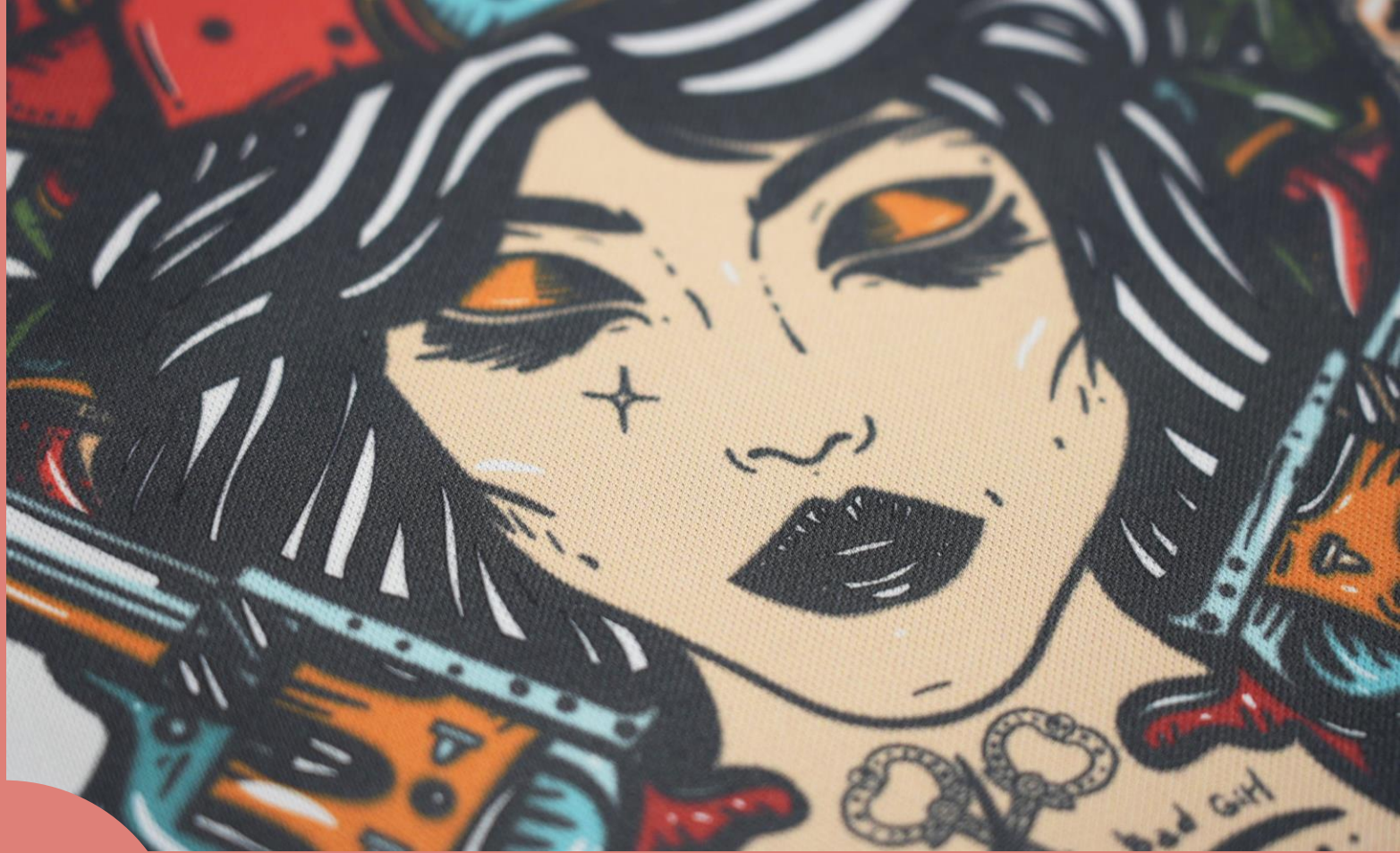
product samples



zwissPRINT



zwissPRINT



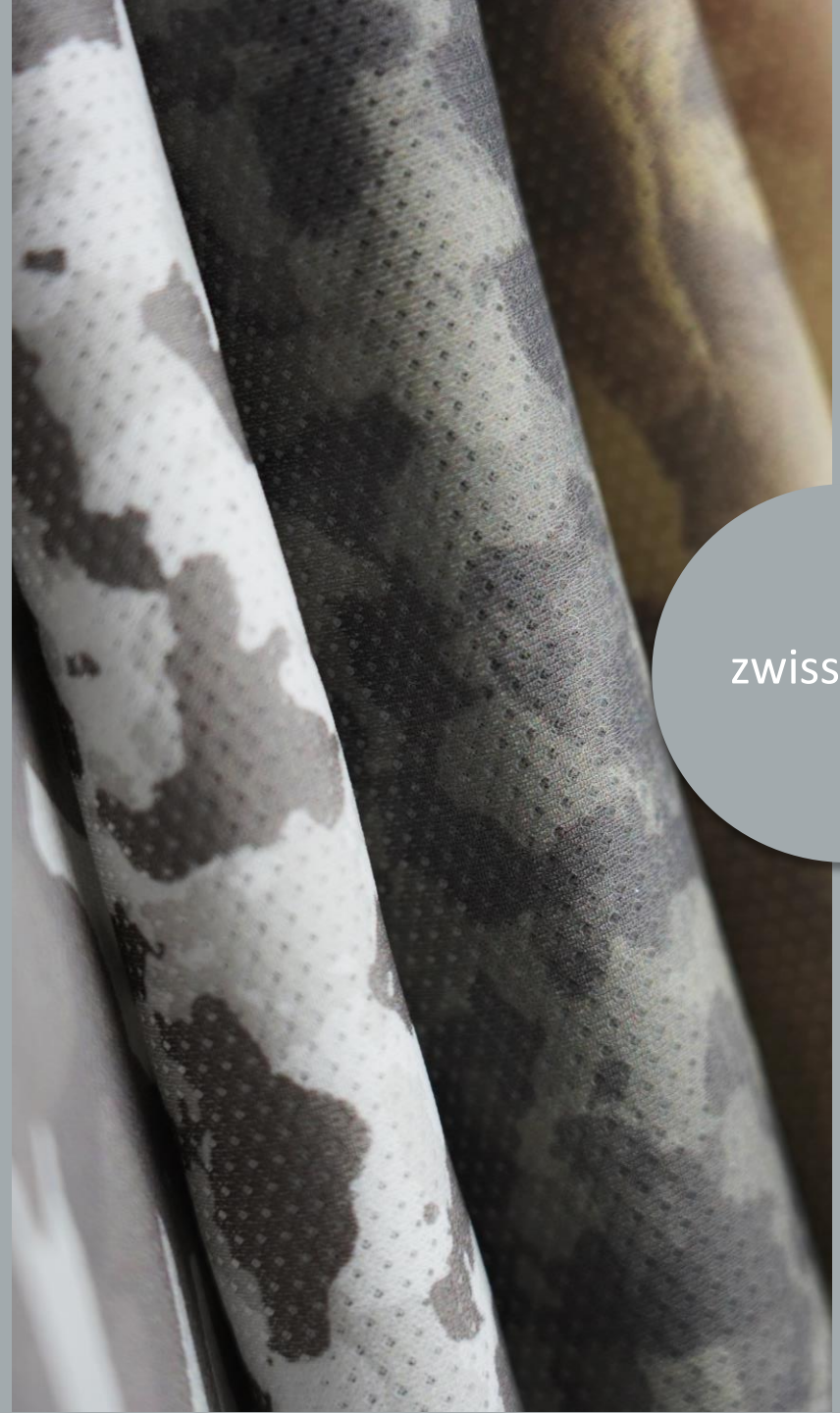
zwissPRINT



The image is a vibrant collage of various fabric patterns. It features several overlapping circular and rectangular sections, each showcasing a different design. The patterns include floral motifs in shades of pink, purple, and blue, as well as abstract, painterly designs in green, yellow, and red. The background is a mix of these colors and textures, creating a rich, multi-colored visual. In the center, there is a prominent green circle with a white border, containing the text 'zwissPRINT' in a clean, white, sans-serif font.

zwissPRINT

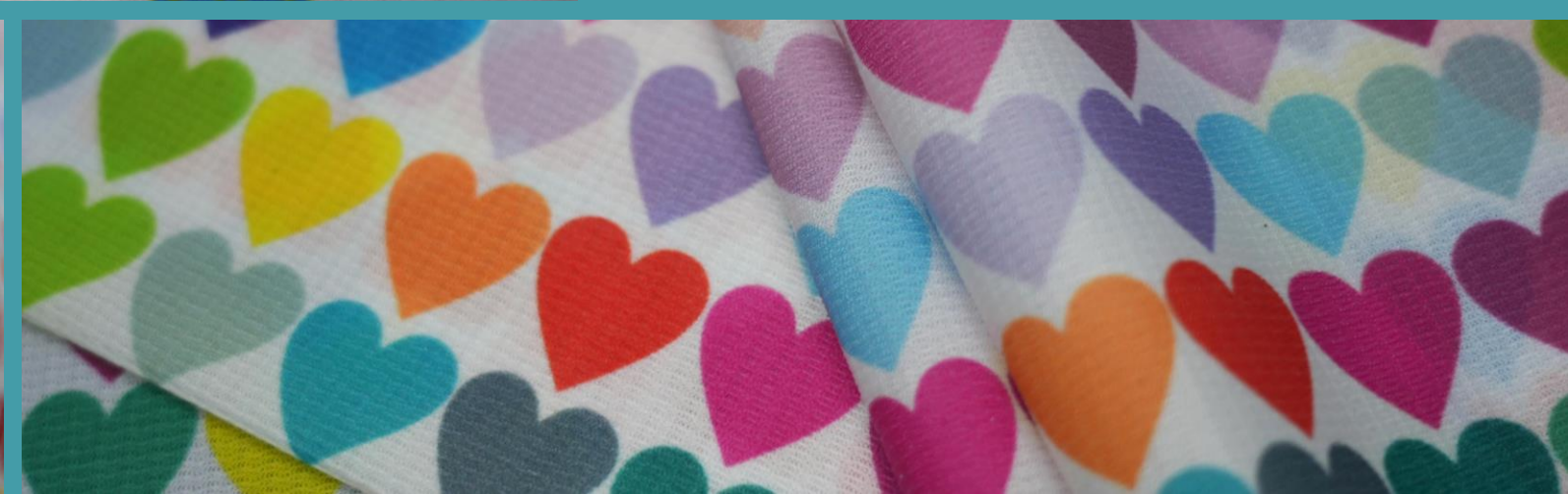
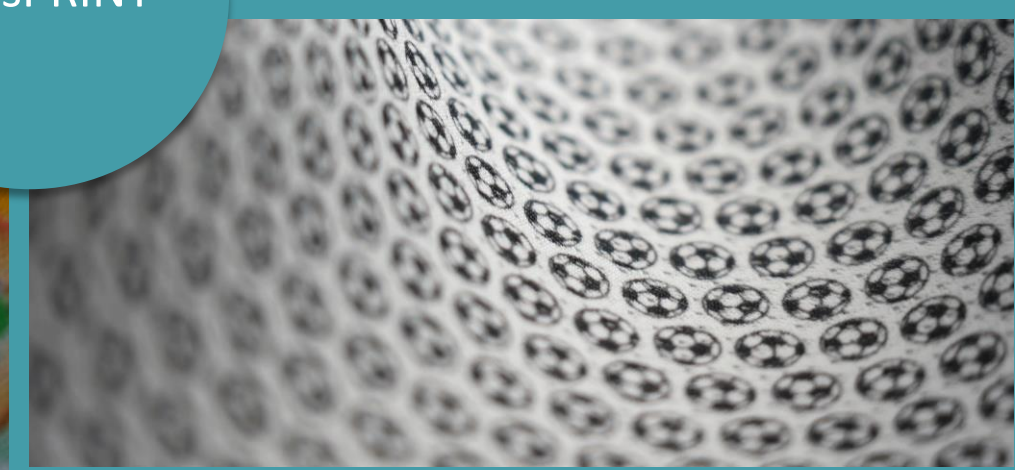




zwissPRINT



zwissPRINT



# zwissPRINT

design variability and sustainability near maximum

